



**Sector 8A Elevation 4**

1 1 : 200



**Sector 8A Elevation 5**

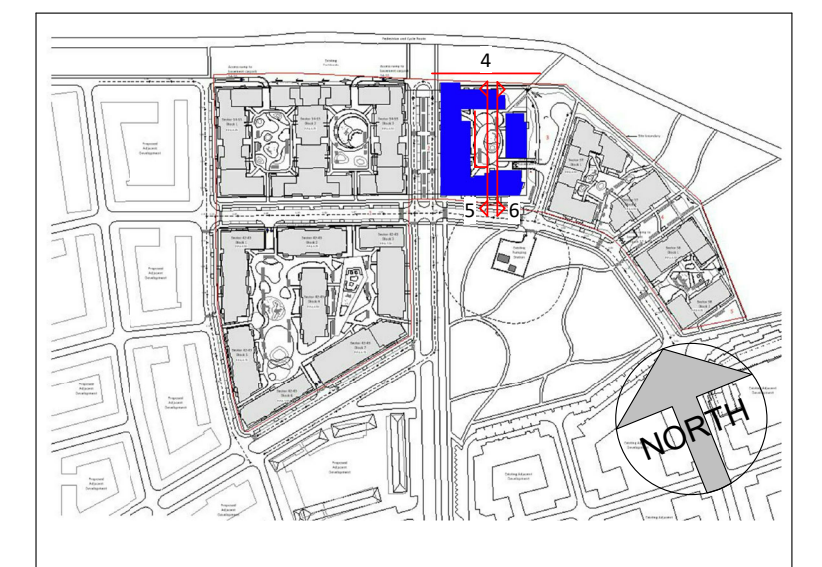
2 1 : 200



**Sector 8A Elevation 6**

3 1 : 200

KEYNOTE TEXT	
Note Number	Note Text
1	Powder-coated aluminium doors and windows. Colour T.B.D.
2	Glazed railing to balcony
3	Reconstituted stone facade finish by Techrete or similar. Colour T.B.D.
4	Green roof to flat roof where indicated
5	Selected zinc cladding.
6	Metal pannel to balcony bulkhead
7	Medium-grey facing brick facade panels by Techrete or similar
8	Dark-grey brick soldier course
9	Glazed curtain wall pannel to Winter Gardens
10	Dark Grey brick facade pannels by Techrete or similar



Rev. No.	Date	By	Description	STATUS SUITABILITY CODES	CLIENT
P01	15/12/2021		Issued for Planning	S0 Work in progress	Lismore Homes Ltd
P02	10/02/2022		Issued for Planning	S1 Shared - for Co-ordination	PROJECT
P03	11/03/2022		Issued for Planning	S2 Shared - for Information	GA2; Residential Development Baldoye
				S3 Shared - for Review & Comment	DWG TITLE
				S4 Shared - for Stage Approval	SECTOR 8A ELEVATIONS
				S6 Shared - for Project Information Model	
				S7 Shared - for Asset Information Model	
				D1 Suitable for Costing	
				D2 Suitable for Tender	
				D3 Suitable for Contractor Design	
				D4 Suitable for Procurement	
				An Published - Approved & Accepted Complete	
				Bn Published - Partially signed off with comments	
				CR Published - Construction Record	
					stage
					<b>PLANNING</b>
					status revision no.
					P03
					project ref. 20003
					Date 15/12/21
					Drawn R RYAN
					Scale 1 : 200
					drawing no. BALN5 -CCH -00 -ZZ -DR -A -183

**CCH ARCHITECTS**  
Architects • Interior Designers • Masterplanners

Lacken House, Dublin Road, Kilkenny R95 KF34  
Tel +353 (0)56 776 1591  
E-Mail: info@cch-architects.com

© Drawing copyright CCH Architects Ltd. Not to be copied, reproduced or distributed without prior consent of CCH Architects Ltd.

NOTE: All dimensions to be checked on site. Do not scale this drawing. Use figured dimensions only. To be read in conjunction with all other relevant project drawings and documents including from other consultants.